


Capability Statement



Contents

- 4 | About us
- 5 | Our delivery methods
- 6 | Our leadership team
- 7 | How we partner with you
- 8 | Projects
 - 10 | Plympton International College
 - 12 | Eyre Village Childcare Centre
 - 14 | Startrack Darra
 - 16 | Harrup Park Country Club
 - 18 | TAFE Heavy Lifting Workshop
 - 20 | Camden Park Development
- 22 | Organisation Chart
- 24 | Our clients



Together,
let's create
amazing
commercial
spaces

Stride is not the oldest or the largest commercial contractor.

We are however the market leader in terms of passion and drive to become the best builder in our market segment.

Stride was established by Keith Wood and David Angus who had 'learned their craft' and realised there was a better way to deliver what clients are seeking on their projects:

- 1 Establish a talent-filled team - a team that has the experience and drive to deliver projects on time and on budget.
- 2 Programme delivery around your requirements, whether it be major revenue streams, the new school term, or a grand opening. Our delivery method focuses on **you first and construction second**.
- 3 Safety is paramount in operating venues. NO HARM is non-negotiable.
- 4 **Communication and transparency** to project stakeholders is essential - key to this is emotional intelligence.

Company Details
Stride Construction Pty Ltd
ABN: 81 624 251 798
ACN: 624 251 798
Address: 239 Diagonal Road, Warradale SA 5046



Our delivery methods

Cost Planning

We all understand that the budget is critical to every construction project. Cost planning occurs through the life cycle of a project. Early engagement and the adoption of a cost plan ensures that the project's commercial feasibility is known before significant expenses are outlaid, mitigating client risk.

The cost plan evolves throughout the period of the project, from concept, developed design, construction and through to handover.

Stride's experienced estimating team, with a combined 50 years of experience, develop the cost plan with consideration to real-time trade and material prices, material and resource availability, market saturation, site constraints, and program and staging requirements.

The team at Stride closely monitor and report against the cost plan to provide you transparency and security throughout your project.

Design & Construct (D&C)

D&C contracting has gained traction as a contracting model because it can de-risk the project client.

This model places the responsibility, and design risk, on the 'shoulders' of the Contractor. The client will often appoint the Contractor to finalise the project documentation. Buildability, value engineering and design management are areas improved in a D&C procurement model.

Guided by the Client's Principal Project Requirements (PPR), Stride and their consultant team determine the most cost-effective and efficient process to deliver the built product.

Early Contractor Involvement (ECI)

Early Contractor Involvement comprises the creation of a collaborative and innovative project team during the early design phase to develop and resolve the planning and methodology of the project.

Generally, GMP (Guaranteed Maximum Price), CM (Construction Management), and MC (Managing Contractor) are all forms of an ECI.

Different ECI models are implemented appropriate to the desired outcome, generally to mitigate a certain project risk. They are often used in projects where challenges exist, such as cost, program or complexity, that will benefit from the early involvement of a building contractor.

ECI processes are also employed where the client seeks greater flexibility through the project or to increase transparency of costs, resulting in reduced variations during the construction phase.

Lump Sum

The traditional method of contracting, lump sum is generally used when the client has developed construction documentation and a lump sum contract can be used.

Stride uses the completed design drawings to price and programme the project. Typically, a construct only model will be tendered to a number of contractors forming the 'tender field'. Tenders are presented based on the tender issue documentation.

Stride will still always endeavor to identify value management options, which could be via project methodology, design efficiencies or through considered staging where the impacts on normal operations can be minimised.



Our Leadership Team

Innovation through experience. From all stages of life we listen and learn from every member of our team to ensure we meet everyone's needs and exceed expectations.



David Angus
Managing Director

Driven, enthusiastic and with a client-focused approach, Dave leads the team at Stride. Dave has a diverse range of experience in commercial construction and building consultancy. Dave has a strong focus on building and maintaining client relationships.



Keith Wood
Founding Director

An astute businessman and known as the godfather of the business, Keith founded the company in 2016. Keith has a strong background in building services to which he owns two other successful businesses.



Michael Zillante
State Manager (SA&VIC)

With over 20 years experience in tier two and tier three construction, Michael's process-driven approach leads the construction delivery and estimating team in South Australia and nationally.



Bret Townsend
Construction Manager (VIC&TAS)

Bret has 15 years' experience working in the construction and fit-out industry. Bret's exceptional client relations skills see him spearhead Stride's Victorian team.



Jess Dawe
National Office Manager

A well organised, commercially astute, and dependable office manager, Jess has 13 years' experience in the role. Committed to providing a high level of customer service and collaborating with others to foster team cohesion.

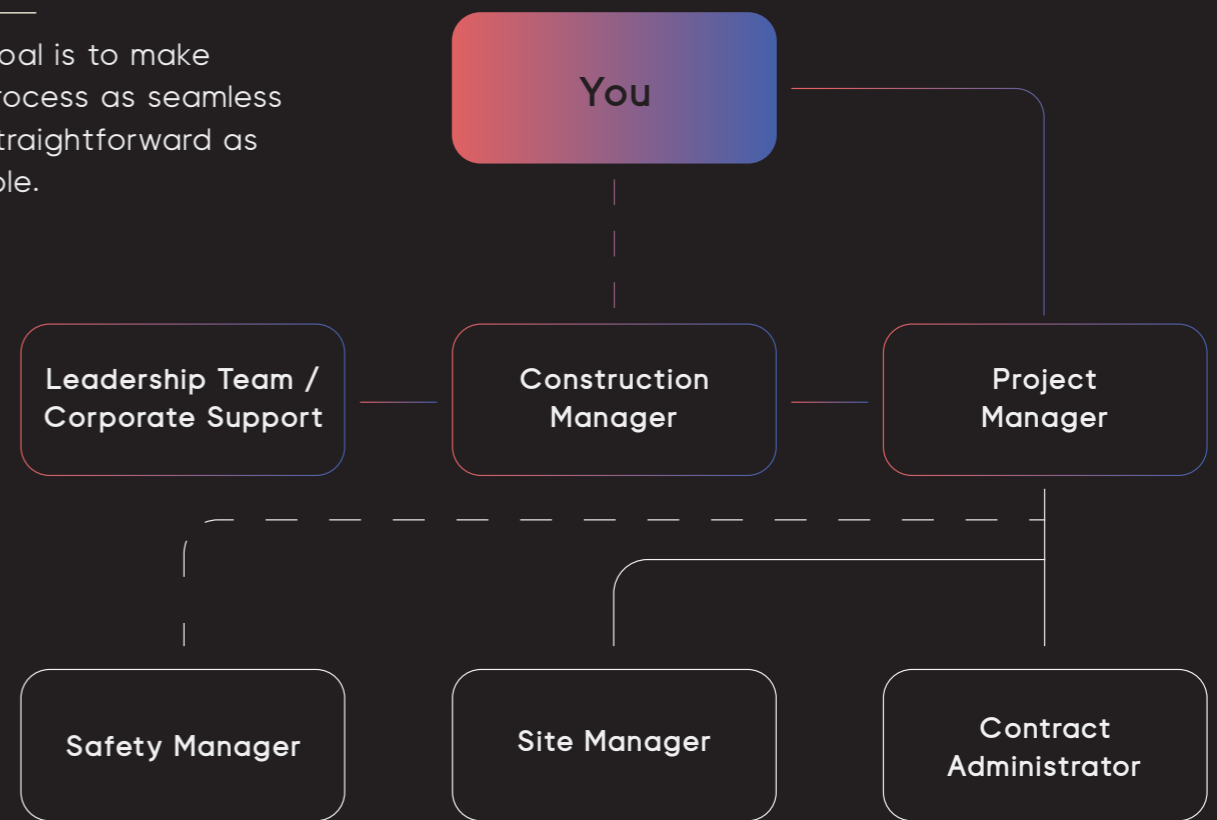


Mark Willims
State Manager (QLD)

Mark is proactive, has hands-on knowledge and management of his projects. Through his oversight of contracts and project management, Mark will diligently provide responsible, efficient, and valuable advice at every stage of the project.

How we partner with you

Our goal is to make the process as seamless and straightforward as possible.




Our areas of service





Our Projects

While we pride ourselves on our process, the proof is in the final result. Our attention to detail, care and finish quality is what is at the heart of Stride. We love showing off our work and these are just a few of the projects that we are particularly proud of.



Any issues or complexities that arose through the construction period were managed successfully and achieved favourable outcomes due to the collaboration and close working relationship between Stride and the client. **The project was delivered on time, within budget and achieved an extremely high standard.**

Karen Erlandsen
Capital Projects Manager
Department for Education (SA)



Plympton International College

Location
Plympton SA

With an eye-catching curved metal facade, the new multi-purpose centre at Plympton International College is an exceptional addition to the existing school infrastructure.

The two-storey building comprises a performing arts centre on the ground level and the upper level includes music rooms and a multi-purpose area. The classrooms in the adjoining building were also refurbished as part of the project.

Stride were engaged by DIT on a lump sum contract to deliver the project in two stages. The project team worked hard to accelerate the program to mitigate the impact of a significant increase in scope as a result of site conditions. The project successfully met the required delivery dates to the satisfaction of stakeholders.

Sector
Education

Contract Type
Lump Sum

Client
Department for Infrastructure and Transport

Delivery Partners
Department for Infrastructure and Transport
Department for Education
Walter Brooke and Associates
Trinamic Consultants and
Jim Wilson Consulting Engineers



Eyre Village Childcare Centre

Location
Eyre SA

The inaugural Eyre Village Nido Childcare Centre consisted of the construction of a timber framed, single-story building with intricate front façade detailing, in the City of Playford.

The ultra-modern centre includes 6 interactive learning spaces for the different age groups, as well as cot room, huge piazza, state of the art commercial kitchen, reading cubby nook, and 3 outdoor playscapes that include mini-Volkswagen car, terrazzo slides, timber cubby houses, water fountains and multiple sand pits.

Due to the novated design team and project consultants being based in Melbourne, therefore unable to travel during the height of Covid-19, Stride had to consider alternative ways to conduct onsite meetings and keep the client involved throughout the build process. Managing the design component, became challenging when the client made several changes to the façade, throughout construction. Stride were able to manage this by integrating the changes into the programme, without losing time.

Further challenges arose when the national material shortage hit, particularly in relation to timber supply. Stride were able to source alternative materials, as well as prioritise and fast-track other aspects of the build, whilst waiting for material deliveries, to ensure no time was lost.

Stride Construction are proud to deliver a quality project for the generations to come.

Sector
Education

Contract Type
Construct

Client
Charles Turnbull
– Focal Investments





Startrack Darra Hardstand

Location
Darra QLD

Stride was engaged by Startrack to expand their secure external hardstand areas of the Darra Distribution Centre. The new 5000m² hardstand area provides a paved stabilised area which additional heavy vehicles can be parked for extended periods of time.

Startrack's key objectives for the project included constructing a new external hardstand to provide further additional unobstructed heavy vehicle access and storage. This guaranteed the loading and unloading of trucks was an easy and safe operation whilst also ensuring that truck drivers can access it during inclement weather events.

Sector
Industrial

Contract Type
Lump Sum/Construct Only

Client
Startrack



Harrup Park Country Club

Location

Harrup Park QLD

We were contracted by Harrup Park Country Club to complete a full refurbishment and refit of the bistro, coffee shop, reception, gaming and outdoor areas.

A substantial build undertaken over 25 weeks, Harrup Park Country Club incorporates complex finishes, unique design features and fittings along with upgrades to the club's sporting facilities and venue capacity.

The vision of a relaxed and upmarket sporting hub to service the Mackay community and their surrounds was successfully achieved through the collaboration with Harrup Park Management and BSPN Architecture.

Sector

Hospitality

Contract Type

Lump Sum

Client

Harrup Park
Country Club

Delivery Partners

BSPN Architecture



TAFE Heavy Lifting Workshop

Location

Acacia Ridge, QLD

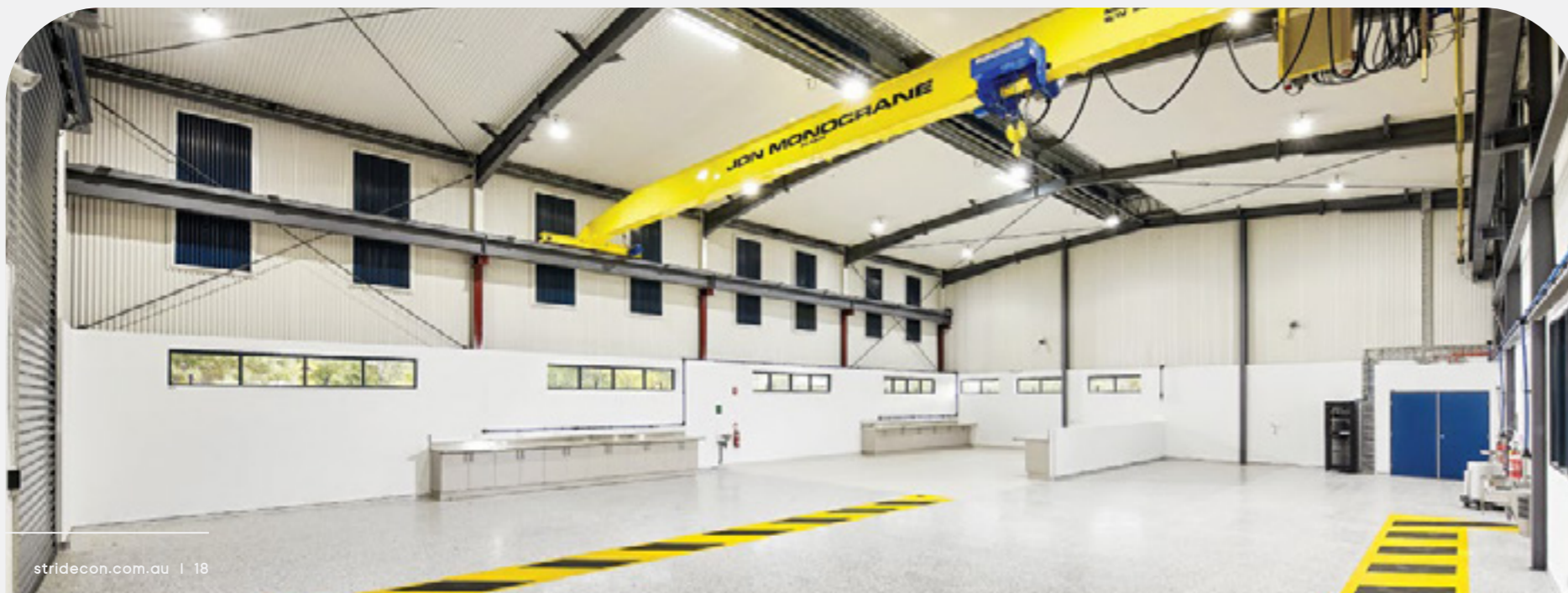
The Acacia Ridge TAFE Campus is based on the south side of Brisbane approximately 15 kilometres from the Brisbane CBD. The construction of the Heavy Plant Workshop & Caravanning Training Centre was simplistic.

The challenge was the site's location, being highly constrained and landlocked on all 4 sides by other TAFE buildings. These construction zone and safety constraints made Stride's site establishment, materials handling, and construction methodology key to the success of the overall project.

Sector
Industrial

Contract Type
Construct

Client
DHPW
(Dept. of Housing & Public Works)





Camden Park Industrial Development

Location

Camden Park SA

Stride completed a multi-stage industrial development on two neighbouring sites in Camden Park. Stage 1 comprised nine warehouses and associated infrastructure on 5000m², which were individually sold by Stride's client. The project highlights the value of the ECI process (early contractor involvement) with Stride working closely and collaboratively with our valued client to deliver significant savings through value management initiatives.

The Stage 2 works comprised the construction of a further seven warehouses on a 16,000m² site, which were retained by the client for the operation of several businesses. The project incorporated specialised infrastructure for the businesses' operations including truck wash bays, oil plate separator, a fuel tank and bowser, and a concrete settling tank. The Stage 3 works are located on the same site and comprise of state-of-the-art offices for the client's group of companies. Stride's continuity of works at the site are testament to our project delivery and collaborative approach which has forged a long-term partnership between APB, TAC and Stride.

Sector
Industrial

Contract Type
ECI

Client
Theo Agelis
Construction and
Adelaide Property
Brokers

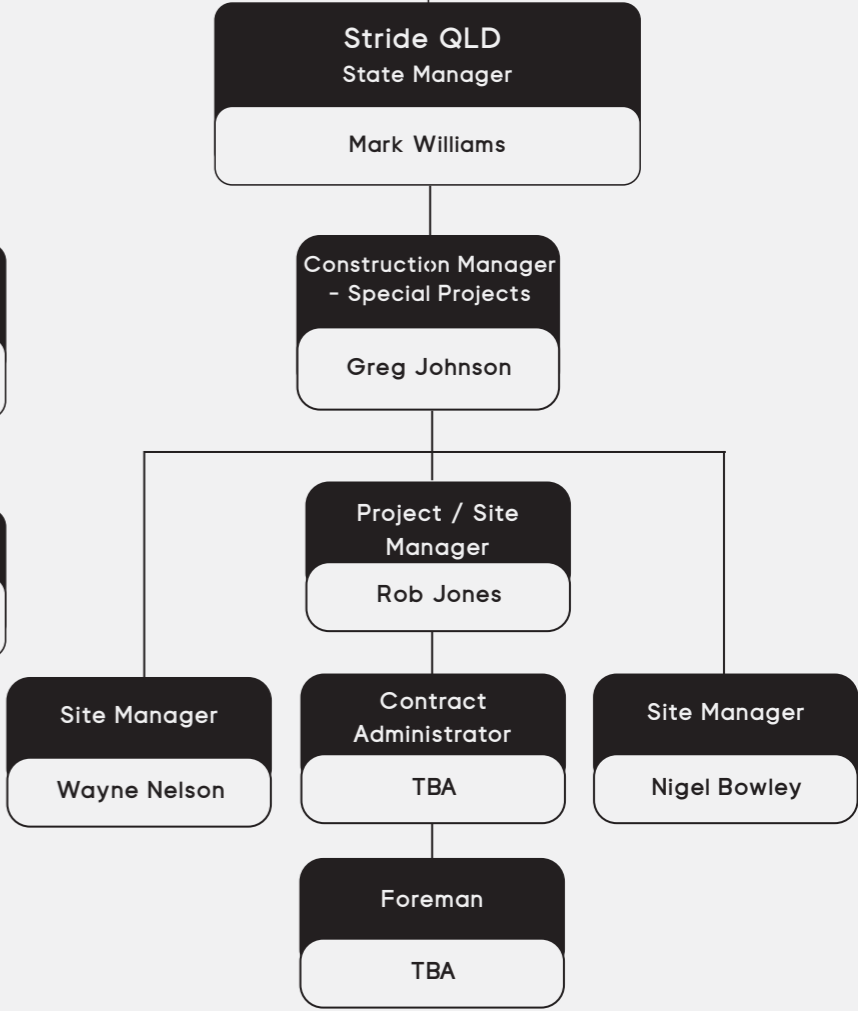
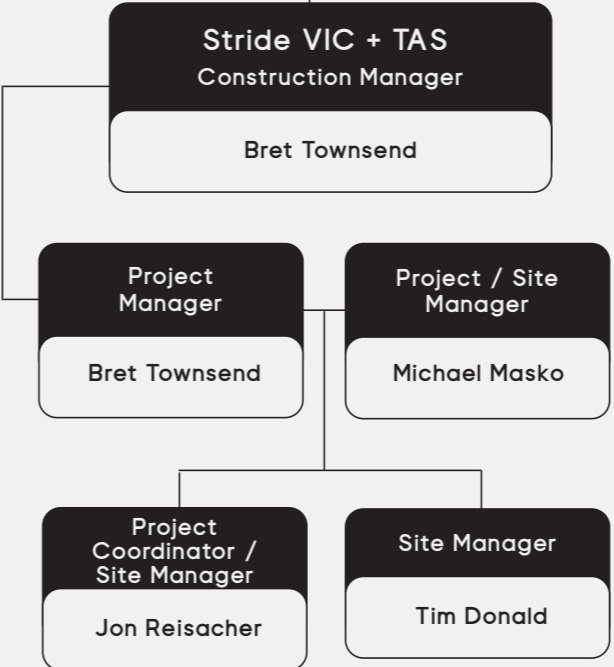
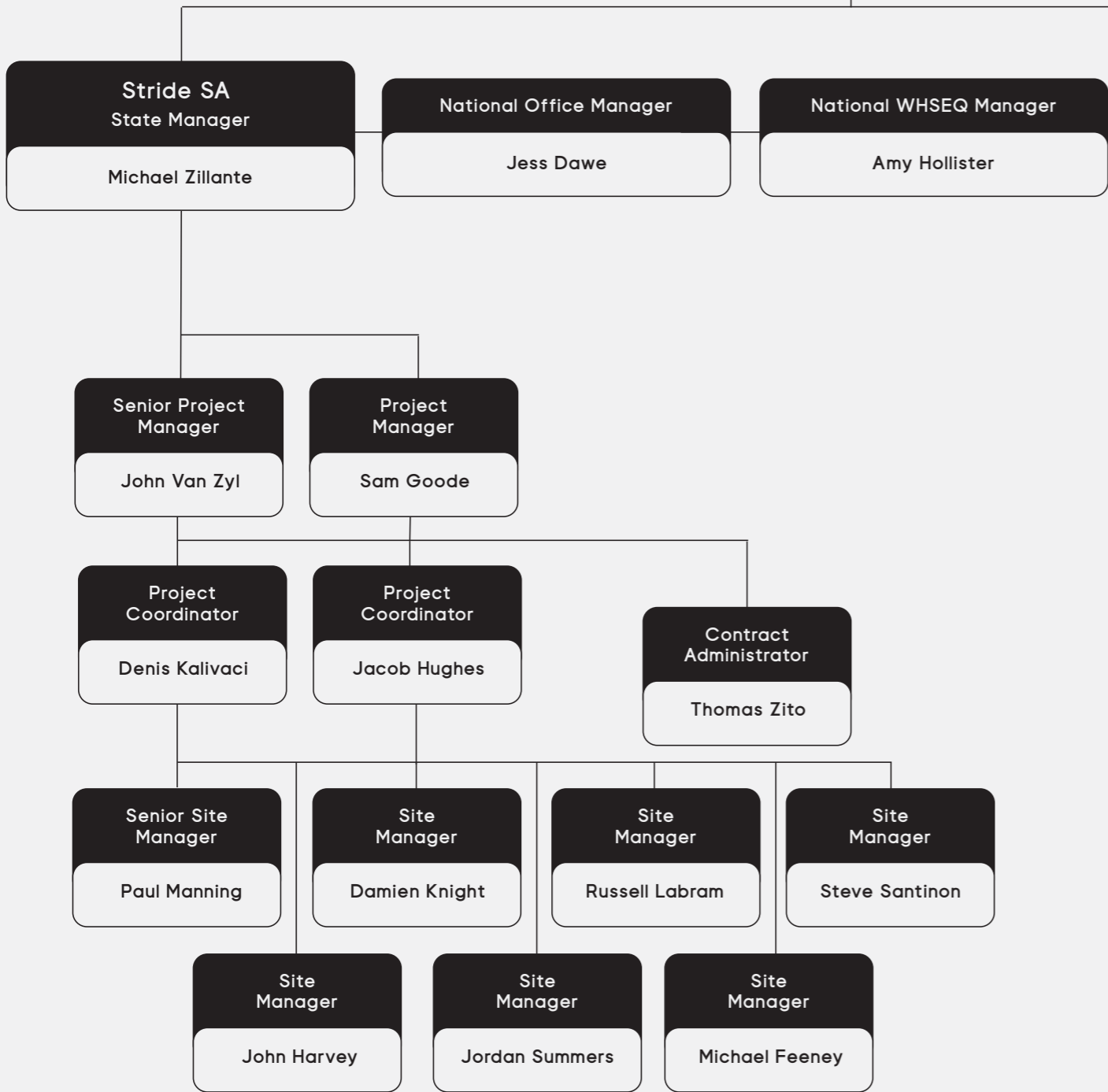
Delivery Partners
Theo Agelis Construction
Adelaide Property Brokers
Tesseract International



Company Organisation Chart

Stride Australia
 David Angus
 Managing Director

Keith Wood
 Founding Director



Estimation Team

Senior Estimator: Dimi Psarros

Bid & Marketing Coordinator: Laura Devine

Our Clients

A selection of our clients is listed below. Our continued relationships with these clients are testament to the results we achieve for them.



Our involvement with Stride, formally Stride SA, has been strong for the past 4 years. Stride quickly became one of our preferred contactors, developing a collaborative working relationship with David, Michael, and their team.

We have enjoyed seeing Stride grow as a team and how they have adapted to our requirements as business to continue to grow the relationship. We are excited to see our relationship with Stride continue to develop as we now personally know most of the team and enjoy the culture that surrounds the projects we develop together.

Scott Meek
Director, Stallard Meek Flightpath

Stride were our builders of choice on two major projects in Camden Park. These projects consisted of multiple warehousing developments with office fit outs and workshops. We found their work professional, communication to be regular, clear, and consistent.

The building process was excellent. The best part of working with Stride was the after-construction service. They have continued to be reliable, professional and attend to any call outs in a timely manner.

Shane Agelis
Director, Theo Agelis Construction



Contact Us

1300 GO STRIDE
1300 46 787433

info@stridecon.com.au

South Australia Office

239 Diagonal Road,
Warradale, SA 5046

Victoria Office

Waterman Business Centre
44 Lakeview Drive
Scoresby, VIC 3179

Queensland Office

2/12 Enterprise St,
Salisbury, QLD 4107

stridecon.com.au



stride
CONSTRUCTION